

PLEASE READ

Installation Notes for Windows XP and Vista



The order of these steps is important for proper installation of your CARDINAL system. Please follow the appropriate instructions (Windows XP or Windows Vista) to install your CARDINAL software and hardware drivers. If you have any questions, please contact Digital Audio Corporation at 1-877-532-2283.

The following procedures describe a new installation of CARDINAL software. If you are upgrading to a new version of CARDINAL software, then the procedure will be similar but you may skip some steps. For example, if your Acon Studio Clean plug-ins and your device drivers are already up-to-date, then you will not be presented with the prompts to install these components in steps 4 and 5.

Windows XP Installation Procedure

1. Turn on your PC, and **make sure that your CARDINAL AccelCore is powered off.**
2. Insert the CARDINAL installation CD into the CD drive. The installation will begin automatically. If your CD does not automatically begin installation, then browse to the CD drive and double-click on the file setup.exe. If you downloaded your software from the DAC support website, start the installation by double-clicking on the setup file (i.e. *AudioLab_2_1_5.exe*).
3. Follow the prompts to install the CARDINAL AudioLab software, then click Finish.



4. Follow the prompts to install the Acon Studio Clean plug-ins, then click Finish.



5. Follow the prompts to install the CARDINAL AccelCore device drivers. During this step you may be presented with a Windows Logo testing warning window like the one shown below. Click “Continue Anyway” to install the drivers.



6. Now, **before running the AudioLab software**, connect the AccelCore hardware to your computer using the included Firewire cable, and turn on the AccelCore hardware. You will hear a brief sound (“da-dunk”) informing you that the computer has detected new hardware; after a few moments, the “Found New Hardware Wizard” will appear.

- a. You may be prompted to connect to Windows Update to search for software. If you are presented with this prompt, choose “No, not this time.”



- b. When asked what you want the wizard to do, choose “Install the software automatically (Recommended).”



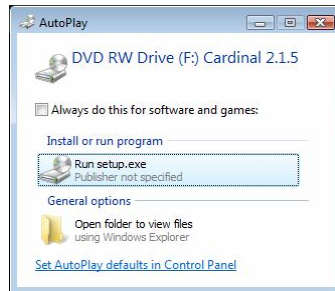
- c. Driver installation may take a minute or two. You may be presented with another Windows Logo testing warning window; again, choose “Continue Anyway.”



- d. Click “Finish” to close the wizard.
- e. If you are prompted to do so, repeat steps a-d to load any additional drivers.
7. Double-click the icon on your desktop to open the CARDINAL software. If your CARDINAL AccelCore requires a firmware update, this will be done automatically upon opening the software. The firmware update may take a few minutes to complete. **DO NOT turn off or disconnect the CARDINAL AccelCore until the firmware update completes!**
8. Congratulations! You have completed the CARDINAL installation.

Windows Vista Installation Procedure

1. Turn on your PC, and **make sure that your CARDINAL AccelCore is powered off.**
2. Insert the CARDINAL installation CD into the CD drive. The installation will begin automatically. You may be presented with a security prompt like the one shown below. If so, choose “Run setup.exe” to install.



If your CD does not automatically begin installation, then browse to the CD drive and double-click on the file setup.exe. If you downloaded your software from the DAC support website, start the installation by double-clicking on the setup file (i.e. *AudioLab_2_1_5.exe*).

3. Follow the prompts to install the CARDINAL AudioLab software, then click Finish.



During this step (and elsewhere during this installation), you may be presented with a Windows Vista security warning - “An unidentified program wants access to your computer.” When you are presented with this window, choose “Allow” to continue installation.

4. Follow the prompts to install the Acon StudioClean plug-ins, then click Finish.



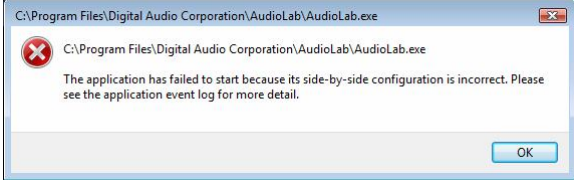

5. Follow the prompts to install the CARDINAL AccelCore device drivers. During this step you may be presented with a security warning window like the one shown below. Click “Install this driver software anyway” to install the drivers.



6. Now, **before running the AudioLab software**, connect the AccelCore hardware to your computer using the included Firewire cable, and turn on the AccelCore hardware. You will hear a brief sound (“da-dunk”) informing you that the computer has detected new hardware.

7. Double-click the icon on your desktop to open the CARDINAL software. If your CARDINAL AccelCore requires a firmware update, this will be done automatically upon opening the software. The firmware update may take a few minutes to complete. **DO NOT turn off or disconnect the CARDINAL AccelCore until the firmware update completes!**

On some Windows Vista installations, particularly after upgrading from one version of AudioLab to another, you may be presented with the following error message:



Known Issue with Windows Vista

This error is due to a problem with a Microsoft redistributable library when installed on Windows Vista. This is a known issue that we anticipate will be fixed in the next release of this library by Microsoft. In the meantime, we have provided the executable Microsoft recommends running to repair this problem.

To fix the error, browse to the following file under the CARDINAL AudioLab installation folder: *C:\Program Files\Digital Audio Corporation\AudioLab\Redist\vc redistrib_x86.exe*. Double-click on this file to run it, and wait for it to complete. It should take less than a minute to run.

When complete, repeat step 7; AudioLab should now operate properly. If you have further problems, please contact DAC for support.

8. Congratulations! You have completed the CARDINAL installation.

Known Issues with Device Drivers

DAC is currently working with our device driver provider to resolve these issues. Please contact us if you have any questions. Please check our website support section (<http://www.dacaudio.com/support.html>) for CARDINAL AudioLab software updates.

1. On some PC's with dual Firewire/USB PCI adapters, the device will only work the first time the device is connected. If the device is disconnected or powered off (and then back on), the software will not function properly. The PC must be rebooted before the software will work again.
2. On some PC's, if the CARDINAL AccelCore is already powered-on before the PC is booted, the software will not work correctly. To prevent this problem, first boot the PC, then power-on the CARDINAL AccelCore.
3. On some systems the driver installation procedure may vary from what is listed above. If you have problems with device driver installation, please call DAC support at 1-877-532-2283.